



सत्यमेव जयते  
**Government of India**  
**Ministry of MSME**

# **Brief Industrial Profile**

## **of**

## **Buldhana District**



सूक्ष्म, लघु एवं मध्यम उद्यम  
MICRO, SMALL & MEDIUM ENTERPRISES

**Carried out by**

**MSME-Development Institute**  
(Ministry of MSME, Govt. of India.)  
CGO Complex, Block 'C', Seminary Hills,  
Nagpur-440006

Phone: 0712-2510046, 2510352  
Fax: 0712- 2511985  
e-mail: dcdi-nagpur@dcmsme.gov.in  
Web- msmedinagpur.gov.in

## Contents

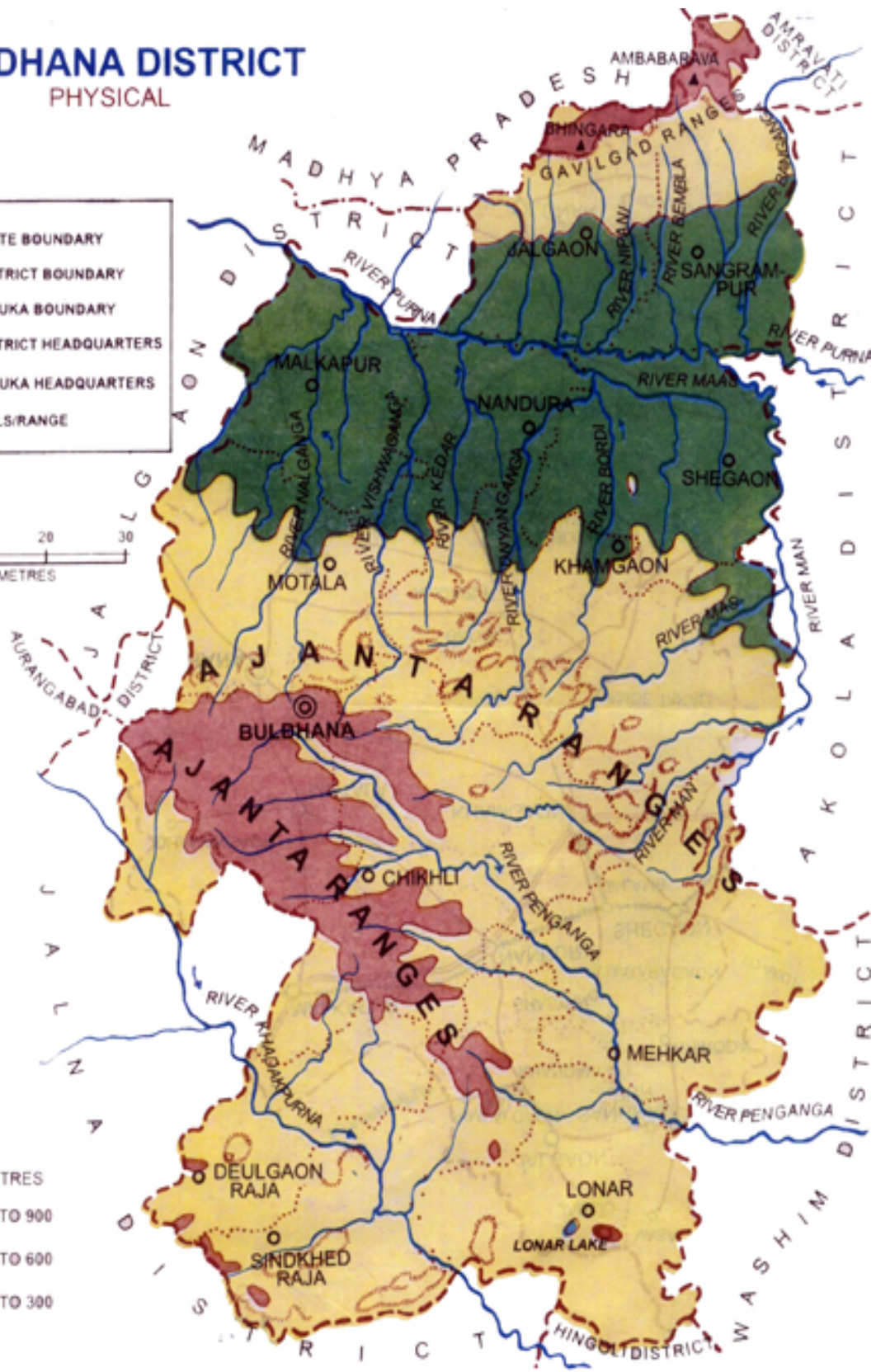
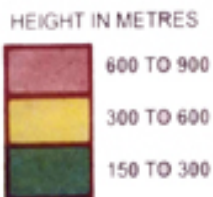
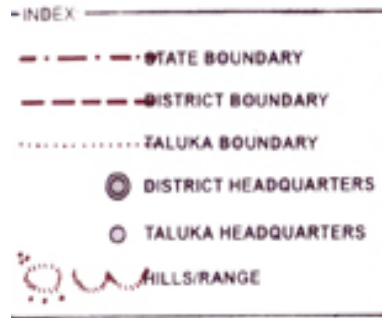
<b>S. No.</b>	<b>Topic</b>	<b>Page No.</b>
1.	General Characteristics of Buldhana District	6
1.1	Location & Geographical Area	6
1.2	Topography	6
1.3	Availability of Minerals.	7
1.4	Forest	8
1.5	Administrative set up	8
2.	District at a glance	9-10
2.1	Existing Status of Industrial Area	11
3.	Industrial Scenario	12
3.1	Industry at a Glance	12
3.2	Year Wise Trend Of Units Registered	12-13
3.3	Details Of Existing Micro & Small Enterprises & Artisan Units In The District	14-17
3.4	Large Scale Industries / Public Sector undertakings	18
3.5	Major Exportable Item	19
3.6	Growth Trend	19
3.7	Vendorisation / Ancillarisation of the Industry	19
3.8	Medium Scale Enterprises	20
3.8.1	List of the units in Buldhana & nearby Area	20
3.8.2	Major Exportable Item	21
3.9	Service Enterprises	21
3.9.2	Potentials areas for service industry	21
3.10	Potential for new MSMEs	21

4.	Existing Clusters of Micro & Small Enterprise	21
5.	General issues raised by industry association during the course of meeting	21
6	Steps to set up MSMEs	22



# BULDHANA DISTRICT

## PHYSICAL



## **Brief Industrial Profile of Buldhana District**

**General Characteristics of the District:** Buldhana is a district in the Amravati division of Maharashtra state in western India at the westernmost border of Vidarbha region and is 500 km from the state capital, Mumbai.

The district is mainly covered in Survey of India topographic Sheet No. 55D/8 partly in 46P and 56 A & lies between 19°51' to 21°17' North latitude and 75°57' to 76°49' East Longitude.

The district consists of five subdivisions and thirteen blocks. The district Head Quarters is at Buldhana. The distances of the other major towns from Buldhana is Aurangabad ( 180 KM ), Pune ( 425 KM ), Amravati ( 200 KM ), Nagpur ( 350 KM ).

This district is a major tourist attraction owing to the ancient Lonar crater (second largest in the world), declared a world heritage. Shegaon of Gajanan Maharaj Sailanibaba's Dargah are the major places of pilgrimage. Sindakhedraja in this district is renowned to be birthplace of Rajmata Jeejabai.

National Highway 6 - NH6 passes through Khamgaon, Nandura, and Malkapur towns in the district.

### **1.1 Location & Geographical Area:**

Buldhana district lies between 19°51' to 21°17' North latitude and 75°57' to 76°49' East Longitude. The principal rivers in the district are Painganga and Purna. It is bounded on the North by Khandawa District of Madhya Pradesh on the South by Parabhani District on the west by Jalna and Jalgaon Districts and on the North East by Amravati District. The other important river are the khandakpurna, Nalganga, Vishwaganga, Gyanganga and Banganga. The principal tributaries of purna are Nalganga, Vishwaganga and Gyanganga from the south. There are two medium irrigation project of the river Nalganga and Gyanganga in the district. The total area of the district is 9661 Sq. Kms. which is about 3.14% of the total area of Maharashtra State.

### **1.2 Topography:**

The district consists of 13 tahsils of which Buldhana, Chikli, Deulgaon Raja, Mehkar, Sindhkhed Raja and Lonar lie on the Balaghat Plateau, while rest seven tahsils viz Khamgaon, Shegaon, Sangrampur, Jalgaon Jamod, Nandura, Malkapur and Motala are in the great planning below known as the panchayat. These are the two natural sub-divisional setup of the district. The edge of the plateau where it falls abruptly into the valley is intercepted by numerous deep ravines.

The landscape is of varied character fertile villages iterating with barren hill sides and deep ravines. Below the ghat the land is flat except where it is broken by spurs of hills putting out into a plain, the general slope of the district above the ghat is from north to south.

The soils are derived from rock of volcanic origin. These are three main categories of soils in the district viz

- 1) Bhurkati: This is deep black soil of a very fine texture and moisture retentive.
- 2) Morand: This is black cotton soil.
- 3) Barad: This is the soil of the higher of the plateau and black, brown or reddish in colour shallow.

The soil in the northern tahsils viz. Jalgaon, Sangrampur, Shegaon, Nandura, Malkapur and Motala are generally deep black formed by transported materials washed from the ghat land. Cotton, Jawar and Groundnut etc. are the main crops grown in this area. On the plateau i.e. remaining six tahsils areas of medium black soils and are suitable to grow cotton, Jowar, Pulses and Bajara.

The climate of the districts is dry and hot in general and considered to be generally healthy. Buldhana town is however the coolest and most pleasant district head quarter in the Vidarbha region. The district receives rains from the south west Monsoon during the period from June to September.

### 1.3 Availability of Minerals:

Buldhana district is not at all endowed with major mineral resources with only a few deposits of Agate (Semiprecious Stones) reported to be occurring in the district. Bricks Soil, Sand and Bolder are some of minor minerals are available in the district.

#### PRODUCTION OF MINERAL 2010-11

S.NO.	NAME OF MINERAL	PRODUCTION in Lakh tones 2010-2011
MAJOR MINERAL		
1.	Agate	Deposits found
MINOR		PRODUCTION in MT 2009-2010
1.	Bolder/Stone	1378400
2.	Murum	578800
3.	Bricks Clay	1920000
4.	Sand	734464
5.	Clay (Simple)	399200

Source: - District Mining Officer, Buldhana

## 1.4 FOREST

During the year 2010-11, an estimated 840.66 Sq KM of area was under forest which constituted 8.70% of the total area. Forest resources contribute significantly to the economy of the district. Forest area is located in Gavilgad Hills in the north and Agentha hills in the south of Buldhana district. Dense forest is observed in Buldhana, Khamgaon and Jalgaon Jamod talukas. The resources are Timber wood, fuel wood, Tendu Patta, Gum, Grass etc.

## 1.5 ADMINISTRATIVE SETUP

For the purpose of administrative conveyance, the district is divided into thirteen Tahsils and Panchayat Samities. According to the 2001 Census, there are 866 Gram Panchayats for the purpose of Rural Development. The Tahsils are given in the Table.

Sl .No	Name of the Tahsil
01	Buldhana
02	Chikhali
03	Deulgaon Raja
04	Sindkhed Rja
05	Lonar
06	Mehkar
07	Khamgaon
08	Sangrampur
09	Malkapur
10	Motala
11	Shegaon
12	Nandura
13	Jalgaon Jamod



## 2. District at a glance

S.No	Particular	Year	Unit	Statistics
<b>1</b>	<b>Geographical features</b>			
(A)	Geographical Data			
	i) Latitude			19.51 to 21.17
	ii) Longitude			75.57 to 76.59
	iii) Geographical Area		Sq. KM	9661
(B)	Administrative Units			
	i) Sub divisions			--
	ii) Tehsils	2011		13
	iii) Villages			1433
	iv) Patwari Circle			--
	v) Panchayat Simitis			13
	vi)Nagar Nigam			--
	vii) Nagar Parishad			11
	viii) Gram Panchayats			866
	xi) Revenue villages			--
	x) Assembly Area			--
<b>2.</b>	<b>Population</b>			
(A)	Sex-wise			
	i) Male	2001	Thousand	1147
	ii) Female	2001	Thousand	1085
(B)	Rural Population	2001	Thousand	1759
<b>3.</b>	<b>Agriculture</b>			
A.	Land utilization			
	i) Total Area	2008-09	Thousand Hectare	967
	ii) Forest cover	2008-09	“	77
	iii) Non Agriculture Land	2008-09	“	41
	v) cultivable Barren land	2008-09	“	80
<b>4.</b>	<b>Forest</b>			
	(i) Forest	2010-11	Sq. KM	840.66
<b>5.</b>	<b>Livestock &amp; Poultry</b>			
A.	<b>Cattle</b>			
	i) Cows	2007	Thousand	556
	ii) Buffaloes	2007	Thousand	153
B.	<b>Other livestock</b>			
	i) Goats & Sheeps	2007	Thousand	417
	ii) Pigs	2007	Nos.	NA
	iii) Chicken & Duck	2007	Thousand	18
	<b>iv) Railways</b>			
	i) Length of rail line	2010-11	Kms	105.84

<b>V) Roads</b>			
(a) National Highway	2010-11	Kms	86
(b) State Highway	2010-11	Kms	1351
(c) Main District Highway	2010-11	Kms	1168
(d) Other District Roads	2010-11	Kms	1477
(e) Rural road	2010-11	Kms	1270
(f) Kachcha Road	2010-11	Kms	--
<b>(VI) Communication</b>			
(a) Telephone connection	2010-11	Nos.	NA
(b) Post offices	2010-11	Nos.	NA
(c) Telephone center	2010-11	Nos.	NA
(d )Density of Telephone	2010-11	Nos./1000 person	NA
(e) Density of Telephone	2010-11	No. per KM.	NA
(f) PCO Rural	2010-11	No.	NA
(g) PCO STD	2010-11	No.	NA
(h) Mobile	2010-11	No.	NA
<b>(VII) Public Health</b>			
(a) Hospital	2010-11	No.	20
(b) Beds in Allopathic hospitals		No.	NA
(c) Ayurvedic Hospital		No.	NA
(d) Beds in Ayurvedic hospitals		No.	NA
(e) Unani hospitals		No.	NA
(f) Community health centers		No.	NA
(g) Primary health centers		No.	52
(h) Dispensaries			75
(i) Sub Health Centers		No.	280
(j) Private hospitals		No.	NA
<b>(VIII) Banking</b>			
(a) Commercial Bank		Nos.	108
(b) V.K.G.B..		Nos.	25
(c) Buldhana Dist. Central Co-op Bank Ltd.		Nos.	106
<b>(IX) Education</b>			
(a) Primary school		Nos.	1605
(b) Middle schools		Nos.	443
(c) Secondary & senior secondary schools		Nos.	83
(d) Polytechnics		Nos.	08
(e) ITI		Nos.	13

District Economic & statistics abstract, Buldhana

## 2.1 Existing Status of Industrial Areas in the District Buldhana as on 31/10/2011.

Sl. No .	Name of Ind. Area	Land acquire d (in hectare)	Land developed (in hectare)	Prevaili ng Rate PerSq.m (in Rs.)	No of Plot s	No of allotte d Plots	No of Vacant Plots	No. of Units in Product ion
1	Khamgaon	202.47	202.47	75/-	515	423	92	245
2	Malkapur	203.39	203.39	100/-	202	187	15	55
3	Chikhali Growth Centre	201.99	201.99	30/-	197	188	09	33
4	Buldhana Mini	10.16	10.16	30/-	24	24	00	09
5	Deulgaon Raja Mini	13.33	13.33	30/-	35	35	00	03
6	Lonar Mini	10	10	30/-	00	00	00	00
7	Mehkar Mini	21.27	21.27	30/-	51	51	00	00
8	Sangrampur Mini	10.3	10.3	30/-	02	02	00	02

Source:- MIDC,Buldhana

### 3. INDUSTRIAL SCENERIO OF BULDHANA DISTRICT

#### 3.1 Industry at a Glance

Sr No	Head	Unit	Particulars
1.	REGISTERED INDUSTRIAL UNIT	NO.	1434
2.	TOTAL INDUSTRIAL UNIT	NO.	1434
3.	REGISTERED MEDIUM & LARGE UNIT	NO.	23
4.	ESTIMATED AVG. NO. OF DAILY WORKER EMPLOYED IN SMALL SCALE INDUSTRIES	NO.	11493
5.	EMPLOYMENT IN LARGE AND MEDIUM INDUSTRIES	NO.	5573
6.	NO. OF INDUSTRIAL AREA	NO.	9
7.	TURNOVER OF SMALL SCALE IND.	IN LACS	--
8.	TURNOVER OF MEDIUM & LARGE SCALE INDUSTRIES	IN LACS	--

#### 3.2 YEAR WISE TREND OF UNITS REGISTERED

	YEAR	NUMBER OF REGISTERED UNITS	EMPLOYMENT	INVESTMENT (lakh Rs.)
Up to	1984-85	37	88.20	163
	1985-86	28	31.35	132
	1986-87	32	80.29	178
	1987-88	49	105.75	262
	1988-89	38	64.03	245
	1989-90	41	205.43	289
	1990-91	47	127.06	342
	1991-92	63	169.76	301
	1992-93	31	155.67	197

	1993-94	43	115.71	209
	1994-95	61	187.24	229
	1995-96	48	322.13	262
	1996-97	57	340.37	278
	1997-98	55	593.51	474
	1998-99	54	1184.74	547
	1999-2000	45	554.00	392
	2000-01	73	1036.81	683
	2001-2002	32	237.00	248
	2002-03	3	230.56	139
	2003-04	22	1338.81	456
	2004-05	26	599.66	374
	2005-06	68	664.31	715
	2006-07	34	1404.04	453
	2007-08	48	2743.66	647
	2008-09	45	1835.81	585
	2009-10	46	2609.82	512
	2010-11	34	1642.00	304
	<b>Total</b>	<b>1160</b>	<b>18667.72</b>	<b>9616</b>

Source: DIC Buldhana

**3.3 DETAILS OF EXISTING MICRO & SMALL ENTERPRISES AND  
ARTISAN UNITS IN THE DISTRICT (MSMEs Groupwise PART– I)**

<b>INDUSTRY GROUPWISE TOTAL NO.OF CUMMULATIVE SINCE INCEPTION MICRO, SMALL &amp; MEDIUM ENTERPRISES, EMPLOYMENT, INVESTMENT &amp; PRODUCTION</b>					
<b>Division as per NIC 1998</b>	<b>Industry Group Description (As per NIC 1998)</b>	<b>No. of enterprises</b>	<b>Employment</b>	<b>Investment P &amp; M (Rs. In lakh)</b>	<b>Installed Capacity (Rs. in lakh)</b>
15	Manufacture of Food products and Beverages	567	5,159	6354	0
16	Manufacture of Tobacco products	0	0	0	0
17	Manufacture of Textile	115	1,753	4020	0
18	Manufacture of Wearing Apparel; Dressing and Dyeing of Fur	1	8	10	0
19	Tanning & Dressing of Leather; Manufacture of Luggage, Handbags Saddlery, harness & Footwear	17	59	28	0
20	Manufacture of Wood, Products of Wood, cork, articles of straw & Plating materials except Furniture;	13	80	35	0
21	Manufacture of Paper and Paper Products	36	492	630	0
22	Publishing, Printing & Reproduction of Recorded Media	22	85	141	0
23	Manufacture of Coke, Refined Petroleum Products & Nuclear Fuel	3	30	129	0
24	Manufacture of Chemicals & Chemical Products	139	1,008	651	0
25	Manufacture of Rubber & Plastic Products	98	880	1457	0
26	Manufacture of Other Non-Metallic Mineral Products	108	12,307	1293	0
27	Manufacture of Basic Metals	16	134	131	0
28	Manufacture of Fabricated Metal Products, Except Machinery & Equip.	225	1,173	1335	0
29	Manufacture of Machinery & Equipment N.E.C.	0	0	0	0
30	Manufacture of Office, Accounting & Computing Machinery	0	0	0	0
31	Manufacture of Electrical, Machinery & Apparatus N.E.C.	22	122	309	0

32	Mfg. of Radio, Television & Communication Equipment & Apparatus	35	84	51	0
33	Equipment of Medical, Precision & Optical Instruments, Watches & Clocks	1	10	15	0
34	Manufacture of Motor Vehicles, Trailers& Semi-Trailers	0	0	0	0
35	Manufacture of Other Transport Equipment	0	0	0	0
36	Manufacture of Furniture ;Manufacturing N.E.C.	6	35	22	0
37	Recycling	0	0	0	0
40	Electricity, Gas, Steam & Hot Water Supply	0	0	0	0
41	Collection, Purification & Distribution of Water	35	169	244	0
50	Maintenance & Repair of Motor Vehicle &Motorcycles; Retail Sale of Automotive Fuel (NIC 1998 CODES : 52000 & 50404)	70	168	111	0
52	Maintenance & Repair of personal & household goods. (NIC Codes : 52601 to 52609)	78	235	78	0
60	Land Transport (NIC Codes 1998 : 60211	0	0	0	0
63	Supporting & Auxiliary Transport Activities (NIC Codes : 63022 & 63091	0	0	0	0
64	Post & Telecommunications (NIC Codes : 64205, 64206, 64207)	0	0	0	0
71	Renting OF Transport Equipment, other Machinery & Equipment N.E.C. (NOC Codes : 71110 to 71290)	0	0	0	0
72	Computer & related activities (NIC Codes : 72201 to 72203, 72300, 72400.72501 % 72502)	31	155	76	0
74	Other business activities (NICE Codes 74131 to 74133, 74221,74300,74941, 74942,74950,74933, 74994) )	0	0	0	0
85	Health & Social work (NIC Codes : 85197,85321	0	0	0	0
92	Recreation, Cultural & Sporting activities (NIC Codes : 92111,93113 to 92115)	0	0	0	0
93	Other Service activities (NIC Codes : 93010 & 93011)	176	585	637	0
	Not Recorded	0	0	0	0
	<b>Total</b>	<b>1814</b>	<b>24731</b>	<b>17757</b>	<b>0</b>

<b><u>MSMEs Group Wise (PART– II )</u></b>					
<b>Division as per NIC 1998</b>	<b>Industry Group Description (As per NIC 1998)</b>	<b>No. of enter- prises</b>	<b>Emple- yment</b>	<b>Investment P &amp; M (Rs. In lakh)</b>	<b>Installed Capacity (Rs. in lakh)</b>
15	Manufacture of Food products and Beverages	219	2,227	4438	46161
16	Manufacture of Tobacco products	0	0	0	0
17	Manufacture of Textile	46	744	1953	19753
18	Manufacture of Wearing Apparel; Dressing and Dyeing of Fur	0	0	0	0
19	Tanning & Dressing of Leather; Manufacture of Luggage, Handbags Saddlery, harness & Footwear	3	6	20	60
20	Manufacture of Wood, Products of Wood, cork, articles of straw & Plating materials except Furniture;	24	78	25.59	78.9
21	Manufacture of Paper and Paper Products	25	493	932	4875
22	Publishing, Printing & Reproduction of Recorded Media	90	248	408	508
23	Manufacture of Coke, Refined Petroleum Products & Nuclear Fuel	4	27	42.45	76.5
24	Manufacture of Chemicals & Chemical Products	46	833	1631.7	4011
25	Manufacture of Rubber & Plastic Products	25	143	108	685
26	Manufacture of Other Non-Metallic Mineral Products	86	955	490	801.6
27	Manufacture of Basic Metals	8	171	152	1286
28	Manufacture of Fabricated Metal Products, Except Machinery & Equip.	158	780	686	2008.5
29	Manufacture of Machinery & Equipment N.E.C.	1	3	2	4
30	Manufacture of Office, Accounting & Computing Machinery	0	0	0	0
31	Manufacture of Electrical, Machinery & Apparatus N.E.C.	1	5	55	200
32	Mfg. of Radio, Television & Communication Equipment & Apparatus	0	0	0	



33	Equipment of Medical, Precision & Optical Instruments, Watches & Clocks	2	12	4	5
34	Manufacture of Motor Vehicles, Trailers& Semi-Trailers	0	0	0	0
35	Manufacture of Other Transport Equipment	0	0	0	0
36	Manufacture of Furniture; Manufacturing N.E.C.	7	33	21	32.5
37	Recycling	0	0	0	0
40	Electricity, Gas, Steam & Hot Water Supply	0	0	0	0
41	Collection, Purification & Distribution of Water	2	30	59	100
50	Maintenance & Repair of Motor Vehicle &Motorcycles; Retail Sale of Automotive Fuel (NIC 1998 CODES : 52000 & 50404)	3	17	33	72
52	Maintenance & Repair of personal & household goods. (NIC Codes : 52601 to 52609)	2	13	4	9
60	Land Transport (NIC Codes 1998 : 60211	0	0	0	0
63	Supporting & Auxiliary Transport Activities (NIC Codes : 63022 & 63091	0	0	0	0
64	Post & Telecommunications (NIC Codes : 64205, 64206, 64207)	0	0	0	0
71	Renting OF Transport Equipment, other Machinery & Equipment N.E.C. (NOC Codes : 71110 to 71290)	0	0	0	0
72	Computer & related activities (NIC Codes : 72201 to 72203, 72300, 72400.72501 % 72502)	15	36	39	61
74	Other business activities (NICE Codes 74131 to 74133, 74221,74300,74941, 74942,74950,74933, 74994) )	0	0	0	0
85	Health & Social work (NIC Codes : 85197,85321	0	0	0	0
92	Recreation, Cultural & Sporting activities (NIC Codes : 92111,93113 to 92115)	0	0	0	0
93	Other Service activities (NIC Codes : 93010 & 93011)	10	43	29.5	64
	Not Recorded	0	0	0	0
	<b>Total</b>	<b>777</b>	<b>6897</b>	<b>11133</b>	<b>80852</b>

Source: DIC, BULDHANA.

### 3.4 Large Scale Industries / Public Sector undertakings

Sr. No.	Name of Industrial Enterprises	Factory address	Products	Investment (Rs. In Crore)	Employment
1	2	3	4	5	6
1	HINDUSTAN LEVER LTD	C-9,MIDC,,KHAMGAON	TOILES SOAPS OTHER THANDENTALS	122.00	696
2	MAHARASHTRA HYBRID SEED CO LTD	DHANORA TQ.NANDURA	SEED PROCESSING	13.15	332
3	SHRI MUNGASAJI MAHARAJ SAH SOOT GIRNI LTD	ANURADHA NAGAR CHIKHALI	COTTON CARDEDOR COMBED (SPINING)	13.85	239
4	VARDHAN SYNTEX P.LTD (BIRLA COTSYN (INDIA) LTD)	A-82,MIDC KHAMGAON	SYNTHITIC FILAMENT YARN	40.62	1231
5	SANJAY GANDHI SAH SOOT GIRNI	JAGAON JAMOD TQ.JALGAON JAMOD	COTTON YARN	12.35	235
6	BIRLA COTSYN (INDIA) LTD	MIDC, MALKAPUR	COTTON SPINNING MILS	120.00	340
7	ANURADHA SUGAR MILL LTD	MASRUL TQ.BULDANA	SUGAR	21.73	155
8	VEER JAGDEORAO KAPUS UTADAK SOOT GIRNI	MALKAPUR	COTTON YARN	14.24	161
9	VAISHANAVI SUGAR INDIA LTD	SHENDURJAN TQ.SINDKHED RAJA	SUGAR	35.62	180
10	PAINGANGA SAH.SOOT GIRNI	SAKHARKHERDA TQ.SINDKHED RAJA	COTTON YARN	75.08	439

11	MAHARASHTRA HYBRID SEED CO LTD	C-2, MIDC KHAMGAON	REFINED OIL	57.05	0
12	SHIVSHAKTI ADIVASI MAGASWARGIYA SAH.SAKHAR KARKHANA	SUJATPUR TQ.SHEGAON	SUGAR	25.44	0

### **3.5 Major Exportable Item: Cotton**

### **3.6 Growth Trend:**

Manufacture of Food products and Beverages & Manufacture of Fabricated Metal Products, Except Machinery & Equip. registered as growth in the last five years. Cotton, Soyabean and Macca Products have the potential for further growth in Buldhana district.

### **3.7 Vendorisation / Ancillarisation of the Industry**

There are 12 Large scale Enterprises and have potential for MSEs to become their vendors.

### **3.8. Medium Scale Enterprises**

Sr. No	Name of Industrial Enterprises	Factory address	Products	Investment (Rs. In Crore)	Employment
1	2	3	4	5	6
1	BENZO CHEM INDUSTRIES P.LTD	B-26/27,MIDC MALKAPUR	CHEMICAL PRODUCTS	3.36	61
2	GAJANAN PAPER MILL P.LTD	PLOT NO.B-10/11/12, MIDC DASARKHED MALKAPUR	PAPER	4.62	100
3	HANUMAN VITAMIN FOOD P.LTD	37 AKOLA ROAD KHAMGAON	VAGETABLE OIL	5.20	45
4	JAY SHREE BALAJI SPINNING MILL P.LTD	GAGOGIYA KUTI SUTALA KHAMGAON	COTTON YARN	5.00	113
5	SARANGDHAR MFG	UKALII TQ.MEHKAR	SUGAR	7.90	1230
6	VIDARBHA REFINERYLTD	AKOLA ROAD KHAMGAON	REFINE OIL	3.00	8
7	MAHARASHTRA HYBRID SEED CO LTD	YELGAON BULDANA	FERTILIZER	3.79	8
8	ANUSAYA POULTRY FARM P.LTD	TENDULWADI MALKAPUR	POULTRY	2.00	0
9	BHARAT GENERAL & TEXTILE INDUSTRIES	MALKAPUR	OTHER	0.70	0
10	BHARAT GENERAL & TEXTILE INDUSTRIES	KHAMGAON	VAGETABLE OIL	1.60	0
11	JIJAMATA SAH.SAKHAR KARKHANA	DUSARBID TQ.SINDKHED RAJA	SUGAR	3.50	0

### **3.8.2 Major Exportable Item : Cotton**

### **3.9 Service Enterprises**

82 Units, Employment - 285, Investment Rs. 401 Lakhs and Production Capacity. Rs. 454.66 Lakhs.

#### **3.9.2 Potentials areas for service industry**

Servicing & Repairing of Machinery, Marketing Consultancy, Equipment rental & leasing, Desktop Publishing, Auto repairs, services, Garages, Laundry & Dry Cleaning, Tailoring, Weigh Bridge, Photographic Lab and X-Ray Clinic has potential in the district.

#### **3.10 Potential for new MSMEs**

Absorbent Cotton, Surgical Bandages, Corn Flour, Corn Flakes, Soyabean Based Products, Bakery Products, Pickle, Papad, Packaged Drinking Water, PVC Rigid Pipes, Agarbatti, Industrial Grease, Readymade Garment, Rolling Shutters, Fabrication, Printing Press, Herbal Cosmetics, Popcorn, Hospital Furniture, Wooden Furniture, Gunny Bags, Corrugated Boxes, RCC Pipes, Dairy Products, School Bags, Mosaic Tiles, Stone Washing has good potential in the district.

### **4. Existing Clusters of Micro & Small Enterprise.**

**No Clusters are identified.**

### **5. General issues raised by industry association during the course of meeting.**

- (1) Capital Incentives for MSME
- (2) Expansion of Existing Industrial Area
- (3) Load shedding in Rural Area

## **6. STEPS TO SET UP MSMEs**

Following are the brief description of different agencies for rendering assistance to the entrepreneurs.

<b>S.No.</b>	<b>Type of assistance</b>	<b>Name and address of agencies</b>
1.	Provisional Registration Certificate ( EM-1) & Permanent Registration Certificate ( EM-II)	The General Manager, District Industries Centre, Jatkar Building, Bus Stand Road, Buldhana
2.	Identification of Project Profiles, techno-economic and managerial consultancy services, market survey and economic survey reports.	The Director MSME-DI, CGO Complex, Block C, Seminary Hills, Nagpur 0712-2510046,2510352
3.	Land and Industrial shed	Regional Manager, MIDC, C/o DIC, Buldhana
4.	Financial Assistance	The A.G.M., SIDBI, National Insurance Building, Kingsway, Nagpur
5.	For raw materials under Govt. Supply	The Manager, MSSIDC, Near Lokmat Bhavan, Wardha Road, Nagpur
6.	Plant and machinery under hire / purchase basis.	The Manager, NSIC, NDTA Complex, Opp. Liberty Cinema, Residency Road, Sadar, Nagpur.
7.	Power/ Electricity	The Executive Engineer, SPANCO, Buldhana.
8.	Technical Know –how.	The Director MSME-DI, CGO Complex, Block C, Seminary Hills, Nagpur 0712-2510046,2510352
9.	Quality & Standard	Bureau of Indian Standards 2 <sup>nd</sup> Floor, NIT Complex, Gokulpeth, Nagpur.

10.	Marketing /Export Assistance	The Director MSME-DI, CGO Complex, Block C, Seminary Hills, Nagpur 0712-2510046,2510352
11.	Other Promotional Agencies	1. Central Agmark Laboratory, North Ambazari Road, Nagpur.  2. Khadi Village Industries Commission, Mount Road, Near Smruti Cinema, Opp. LB hotel, Sadar, Nagpur.  3. Maharashtra Pollution Control Board, Udyog Bhavan, Civil Lines, Nagpur.  4. NABARD, Buldhana